

Rivers to Ridges Partnership

2019 Accomplishments

Acres of
Habitat
Restored

452

Number of
Plants Planted

499,280

Participants
in Outreach and
Educational Events

24,984

Acres of
Land Protected

2,024

Volunteer
Hours

42,271

Miles of Trail
or Path Built

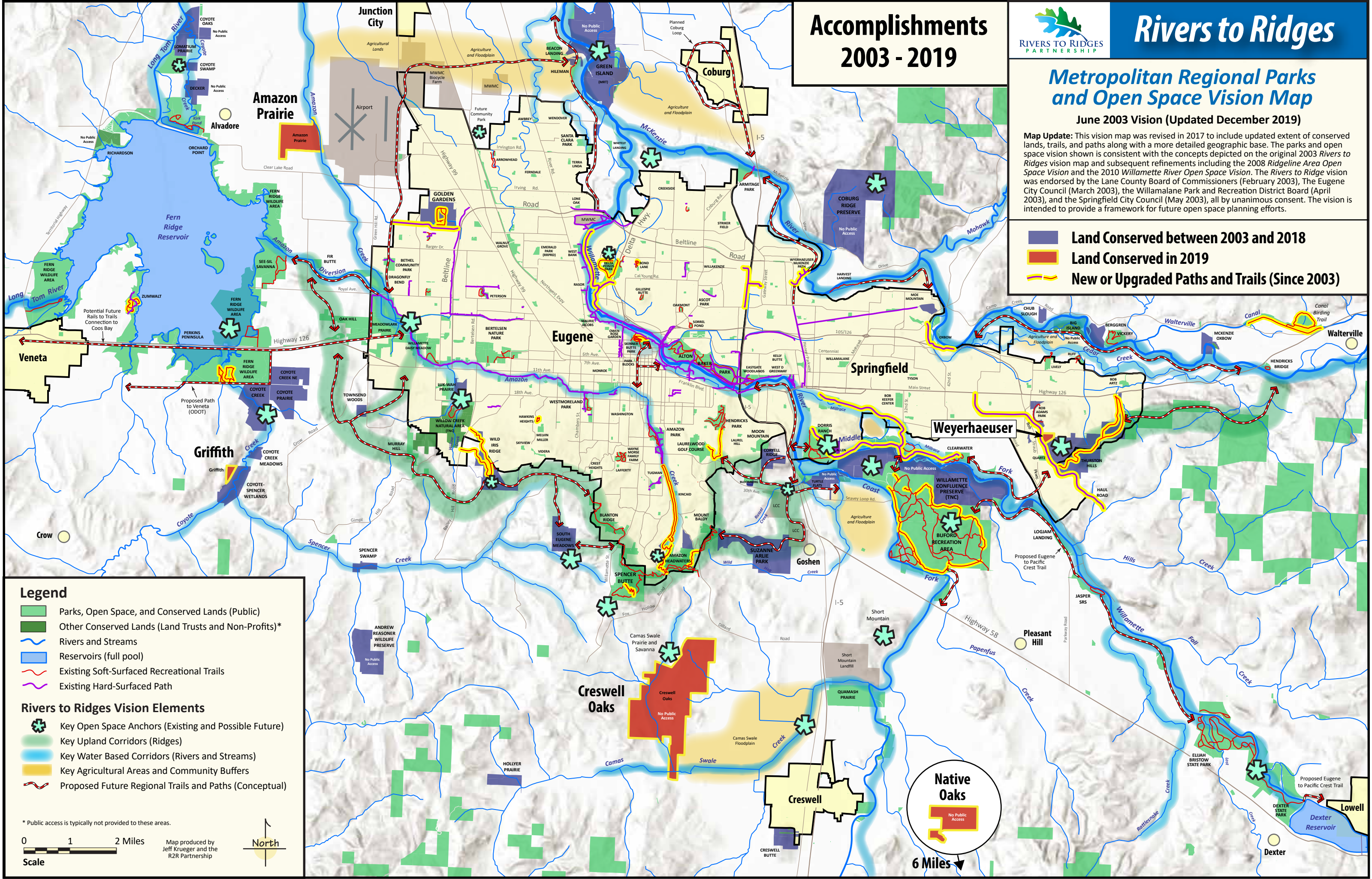
2.4

Pounds of
Seed Planted


1,685



RIVERS TO RIDGES
PARTNERSHIP



Accomplishments 2003 - 2019



Rivers to Ridges

Metropolitan Regional Parks and Open Space Vision Map

June 2003 Vision (Updated December 2019)

Map Update: This vision map was revised in 2017 to include updated extent of conserved lands, trails, and paths along with a more detailed geographic base. The parks and open space vision shown is consistent with the concepts depicted on the original 2003 *Rivers to Ridges* vision map and subsequent refinements including the 2008 *Ridgeline Area Open Space Vision* and the 2010 *Willamette River Open Space Vision*. The *Rivers to Ridges* vision was endorsed by the Lane County Board of Commissioners (February 2003), The Eugene City Council (March 2003), the Willamalane Park and Recreation District Board (April 2003), and the Springfield City Council (May 2003), all by unanimous consent. The vision is intended to provide a framework for future open space planning efforts.

Land Conserved between 2003 and 2018

Land Conserved in 2019

New or Upgraded Paths and Trails (Since 2003)

Legend

Parks, Open Space, and Conserved Lands (Public)

Other Conserved Lands (Land Trusts and Non-Profits)*

Rivers and Streams

Reservoirs (full pool)

Existing Soft-Surfaced Recreational Trails

Existing Hard-Surfaced Path

Rivers to Ridges Vision Elements

Key Open Space Anchors (Existing and Possible Future)

Key Upland Corridors (Ridges)

Key Water Based Corridors (Rivers and Streams)

Key Agricultural Areas and Community Buffers

Proposed Future Regional Trails and Paths (Conceptual)

* Public access is typically not provided to these areas.

0

1

2 Miles

Map produced by
Jeff Krueger and the
R2R Partnership

North

Native Oaks

No Public Access

6 Miles

Our Mission

The Rivers to Ridges (R2R) Partnership is dedicated to improving the quality of life for residents in the upper Willamette Valley by working together to protect and enhance the region's land and water resources and their ecosystem functions and values; and to provide environmental education and compatible outdoor recreation opportunities.



Photos: Cover, Suzanne Arlie Park (P. Gordon); Back cover from left to right, top to bottom: Red-breasted sapsucker (C. Kerst); Gray hairstreak (R. Newman); Gillespie Butte (City of Eugene); Mussel survey boats at Elijah Bristow State Park (MFWWC); Deltoid balsamroot (E. Alverson), Wetland visit in west Eugene (WREN), McKenzie River (T. Giraudier), Sunset from Spencer Butte (J. Krueger).

Vision Refresh Process to Begin in 2020

At its December 2019 annual meeting, the R2R Executive Team agreed to launch a vision "refresh" process which will be implemented starting in 2020 with a target completion date of 2022 (twenty year anniversary of R2R). This two phase effort will initially work with partner organizations to evaluate a much broader regional geography. The second phase will focus on updating the 2003 R2R vision map and will involve a robust public process that will celebrate twenty years of accomplishment and shape the vision for the next twenty years.

Partner Organizations

- City of Eugene
- Coast Fork Willamette Watershed Council
- Friends of Buford Park & Mount Pisgah
- Lane County Public Works Department
 - Long Tom Watershed Council
 - McKenzie River Trust
- McKenzie Watershed Council
- Middle Fork Willamette Watershed Council
 - Mount Pisgah Arboretum
- Oregon Department of Fish & Wildlife
- Oregon Parks and Recreation Department
 - The Nature Conservancy
 - U.S. Army Corps of Engineers
 - U.S. Bureau of Land Management
 - U.S. Fish & Wildlife Service
- Willamalane Park and Recreation District
- Willamette Resources and Educational Network



To Learn More

rivers2ridges.org

