

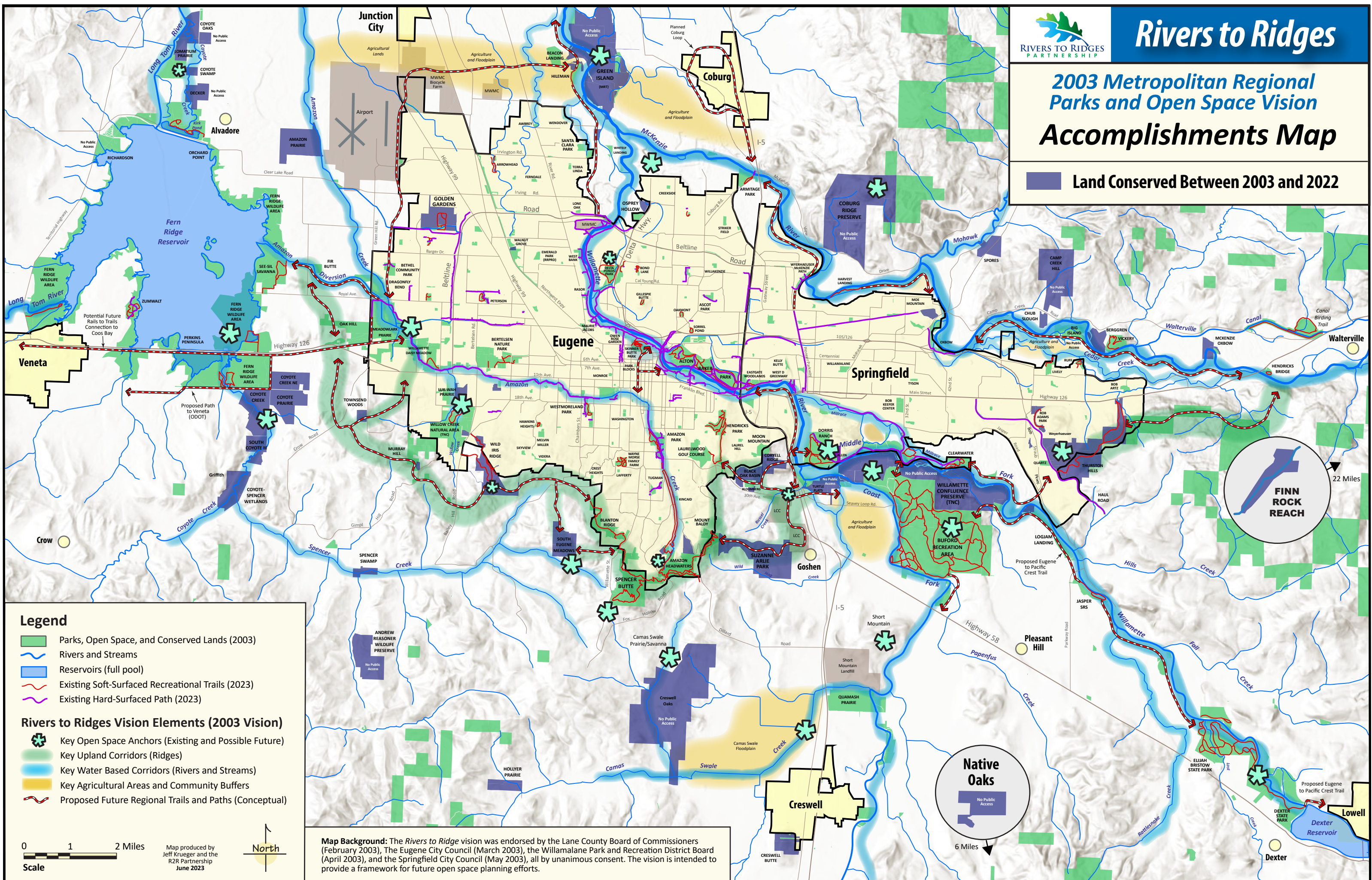


Rivers to Ridges

2003 Metropolitan Regional Parks and Open Space Vision

Accomplishments Map

Land Conserved Between 2003 and 2022



Legend

- Parks, Open Space, and Conserved Lands (2003)
- Rivers and Streams
- Reservoirs (full pool)
- Existing Soft-Surfaced Recreational Trails (2023)
- Existing Hard-Surfaced Path (2023)

Rivers to Ridges Vision Elements (2003 Vision)

- Key Open Space Anchors (Existing and Possible Future)
- Key Upland Corridors (Ridges)
- Key Water Based Corridors (Rivers and Streams)
- Key Agricultural Areas and Community Buffers
- Proposed Future Regional Trails and Paths (Conceptual)

0 1 2 Miles
Scale

Map produced by
Jeff Krueger and the
R2R Partnership
June 2023



Map Background: The *Rivers to Ridge* vision was endorsed by the Lane County Board of Commissioners (February 2003), The Eugene City Council (March 2003), the Willamalane Park and Recreation District Board (April 2003), and the Springfield City Council (May 2003), all by unanimous consent. The vision is intended to provide a framework for future open space planning efforts.